

UNIVERSITY OF MALAYA

PROF DR Ir CLARENCE ATH TEE 池得閣 博士(劍橋)

PhD (Cambridge), PEPC (Electrical), CEng (UK), ACPE (Electrical), Fellow IET, Fulbright Fellow;
博士(劍橋), 专业工程师执业证书(電機), 特许工程师(英國), 东盟特许专业工程师(電機),

工程技术学院尊贵学会会员(英國), 富布赖特尊贵学会会员.

PROFESSOR (Department of Electrical Engineering, 教授, 電機工程學系),

DIRECTOR (Industrial Liaison Division, 总监, 工程学院工业联络处).



since 1905

中马科技合作:2019年5月.

China-Malaysia Collaboration in Science & Technology:
May 2019.



马来亚大学历史



History



The **King Edward VII College of Medicine** was founded in **1905** to train the first Malaysian (Malayan) doctors. The College later became known as the University of Malaya in Singapore.



The University of Malaya **Kuala Lumpur campus** was established in **1959**.

The **University Hospital** was opened in **1968**.



Present day University of Malaya.

1905



King Edward VII College of Medicine, Singapore

1928



Raffles College Singapore

1949



Raffles College was merged with King Edward VII College of Medicine to become the University of Malaya.

1962

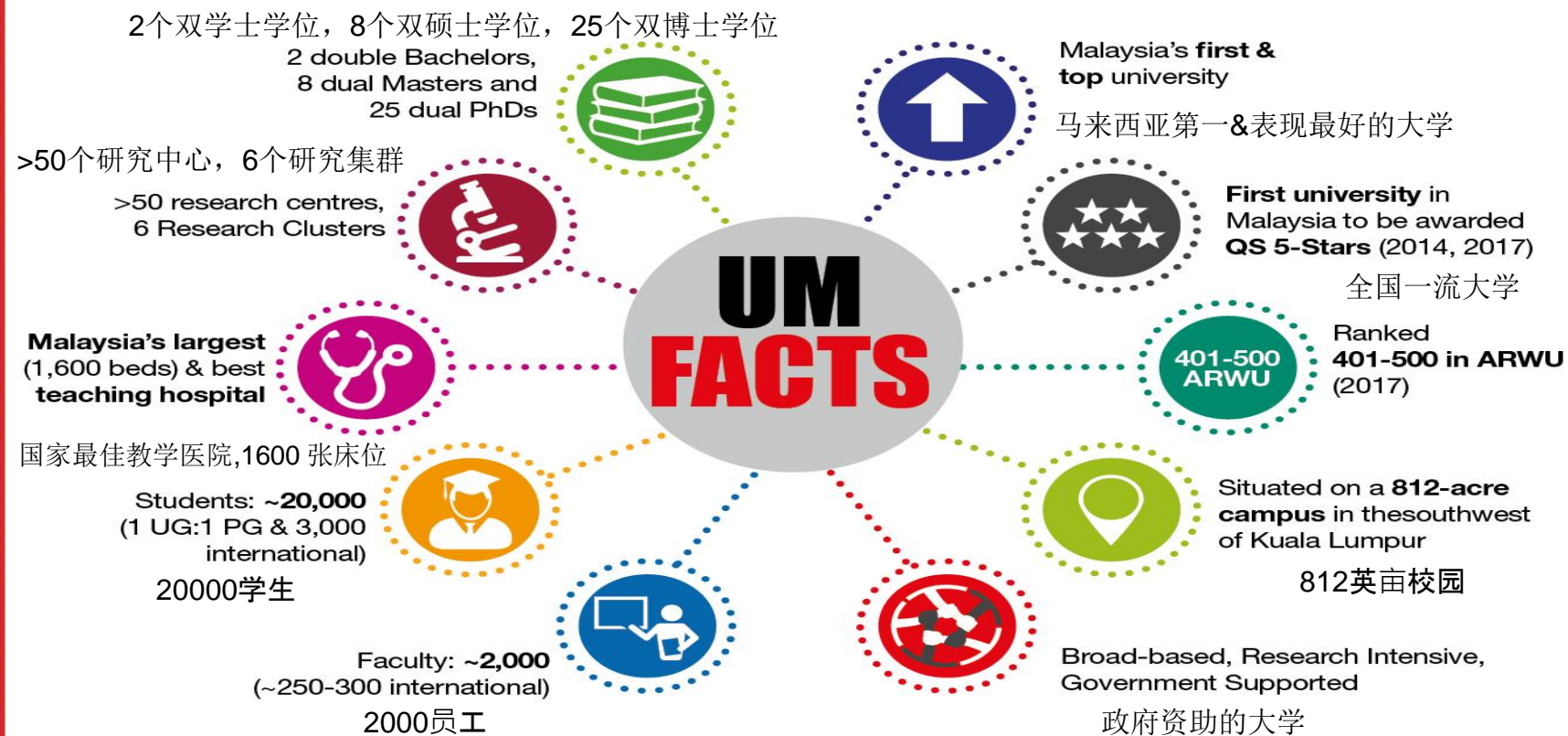


University of Singapore (now known as National University of Singapore)



University of Malaya Kuala Lumpur

马来亚大学的事实和数字



Since 1905

世界大学排名



UM Rankings

87

QS WORLD UNIVERSITY RANKINGS

24

QS UNIVERSITY RANKINGS ASIA

Green Metric
World University Ranking

34



Malaysian universities in Times Higher Education Asia University Rankings 2019

Institution	2019 Rank	2018 Rank
Universiti Malaya (UM)	=38	46

马来西亚大学医疗中心



University of Malaya Medical Centre iCare (Home-grown fully integrated THIS)

First
and best
teaching
hospital in
Malaysia

**1600
beds**
covering all
specialties

Endoscopy Unit 内镜检查装置

- Recognised by World Endoscopy Organisation
- 1 of only 16 Centres of Excellence in the World
- 1 of only 4 Centres of Excellence in Asia

Clinical Investigation Centre 临床调查中心

- 1st *IQVIA Malaysia Prime Site (2017)
- 3rd in the Top-5 IQVIA APAC Prime Sites (2017)
- 7th in the global Top-10 IQVIA Prime Sites (2017)
- Prime Site Quintiles Status for 7 consecutive years from 2010 - 2017
- INSPIRE Site (Investigator Networks, Site Partnership, and Infrastructure for Research Excellence) from 2013 – 2021
- First-Patient-In (FPI) in the world Award by IQVIA (2017)
- *PAREXEL Site Alliances 2017 (First in Malaysia)
- Top 1 Patient Recruitment in Malaysia by PAREXEL (2017)



认可/专业学术课程

Accredited/ Professional Academic Programmes

1. Bachelor of Science in Architecture (RIBA Part 1)
2. Master of Architecture (RIBA Part 2)

Institution of Chemical Engineering (IChemE), United Kingdom

IChemE
ADVANCING CHEMICAL ENGINEERING WORLDWIDE

Bachelor of Engineering (Chemical)

RIBA

Royal Institute of British Architects (RIBA), United Kingdom

Washington Accord

INTERNATIONAL ENGINEERING ALLIANCE

1. Engineering (Biomedical)
2. Engineering (Chemical)
3. Engineering (Civil)
4. Engineering (Environmental)
5. Engineering (Electrical)
6. Engineering (Computer Aided Design & Manufacturing)
7. Engineering (Manufacturing)
8. Engineering (Telecommunication)
9. Engineering (Mechanical)
10. Engineering (Materials)
11. Engineering (Computer)
12. Engineering (Prosthetics and Orthotics)

1. Master of Business Administration
2. Bachelor of Business Administration
3. Bachelor of Accounting

ASSOCIATION OF MBAs
ACCREDITED

Association of MBAs

Association to Advance Collegiate Schools of Business (AACSB)

AACSB
ACCREDITED

1. Bachelor of Business Administration
2. Bachelor of Accounting

1. Bachelor of Science (Chemistry)
2. Bachelor of Science (Applied Chemistry)

ROYAL SOCIETY OF CHEMISTRY

Royal Society of Chemistry (RSC)

Royal College of Surgeons of England, United Kingdom

Royal College of Surgeons
ROYAL COLLEGE OF SURGEONS OF ENGLAND

1. Master of Orthodontics
2. Master of Clinical Dentistry (Restorative Dentistry in Periodontology)
3. Master of Clinical Dentistry (Restorative Dentistry in Prosthetic Dentistry)

Master of Orthodontics

THE ROYAL COLLEGE OF SURGEONS OF EDINBURGH

Royal College of Surgeons of Edinburgh, United Kingdom

Royal College of Surgeons in Ireland, Republic of Ireland

RCSI
ROYAL COLLEGE OF SURGEONS IN IRELAND
GOLARTE BÉAGA NA MACHALA IN ÉIREANN

1. Master of Clinical Dentistry (Child Dental Health)
2. Master of Clinical Dentistry (Oral & Maxillofacial Surgery)

Master of Orthodontics

ROYAL COLLEGE OF PHYSICIANS AND SURGEONS OF GLASGOW

Royal College of Physicians and Surgeons of Glasgow, United Kingdom

Royal Institution of Chartered Surveyors, United Kingdom

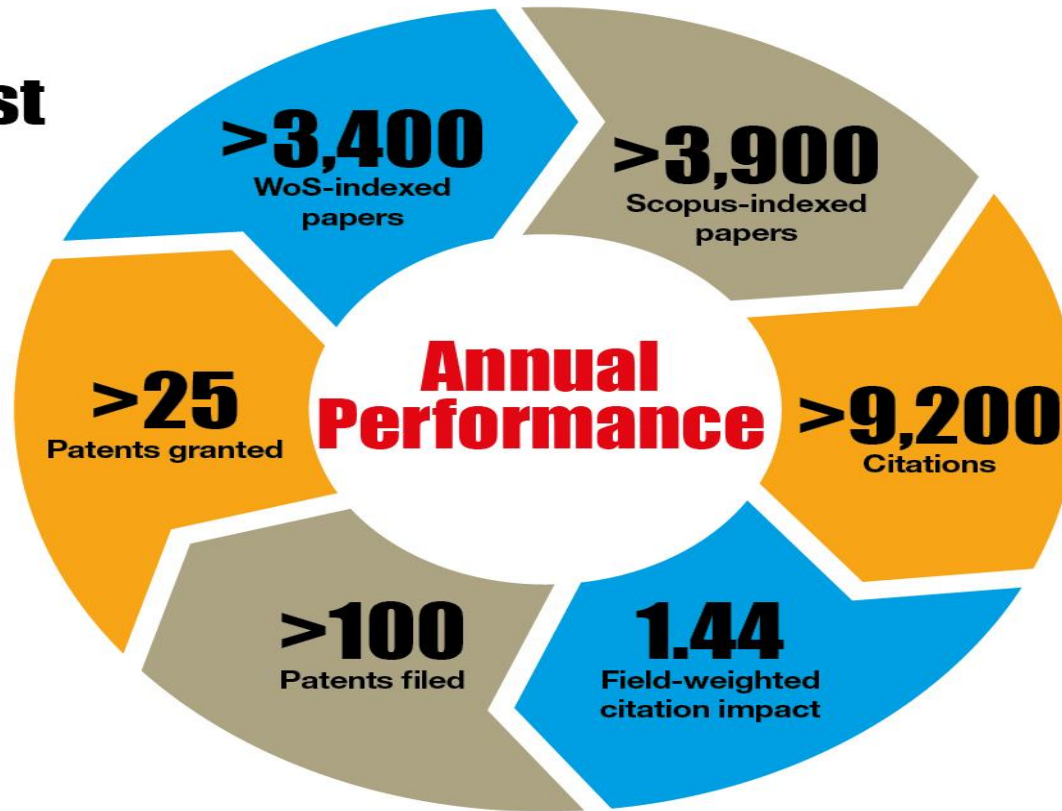
RICS

1. Master of Real Estate
2. Bachelor of Estate Management
3. Bachelor of Quantity Surveying
4. Bachelor of Building Surveying

马来西亚最高认可研究大学

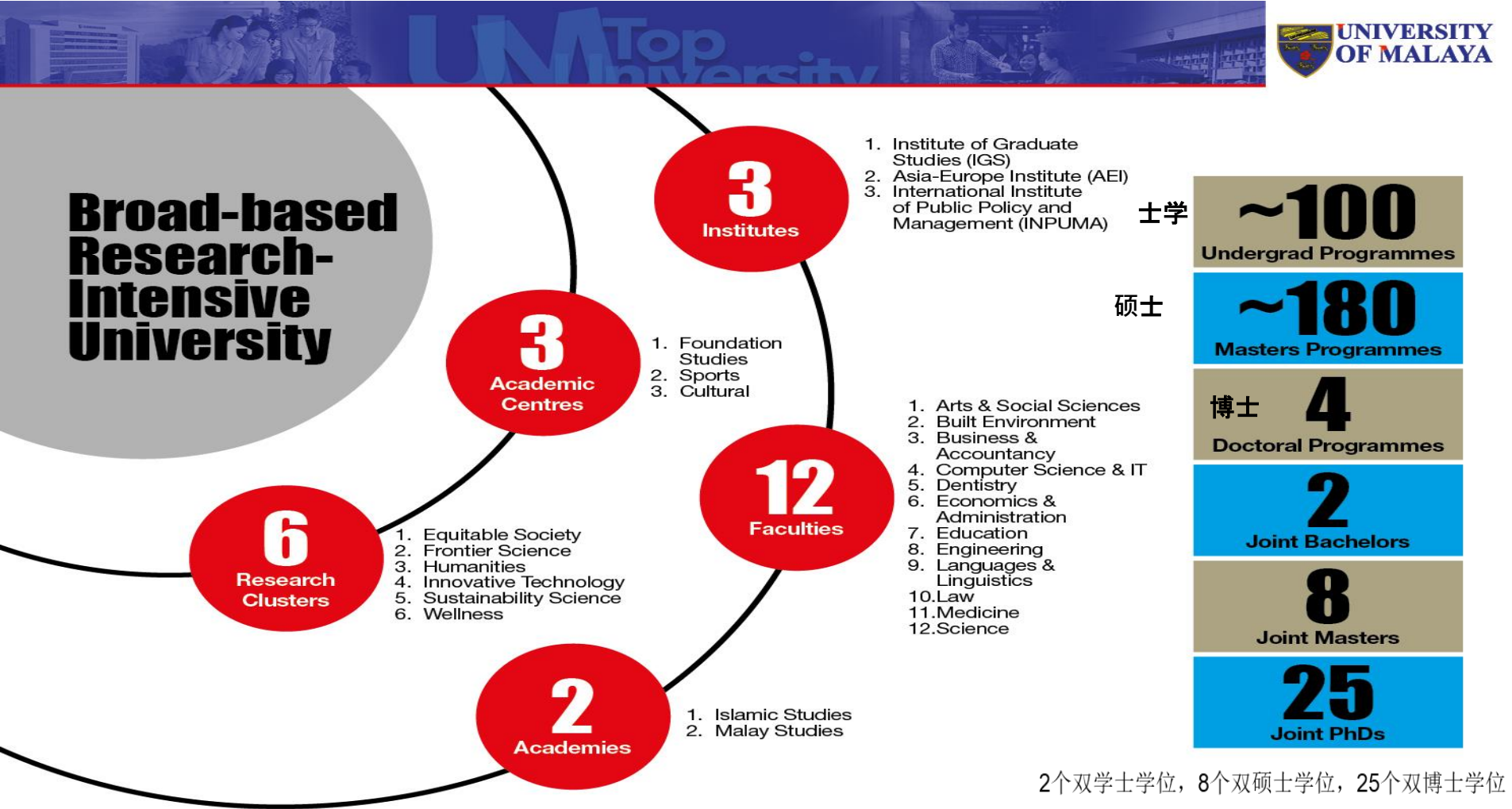


Malaysia's Top and Most Accredited Research University



高影响、高引用出版物和专利

基础广泛的研究型大学



3个研究所、12个学院、2个学院、3个学术中心、6个研究小组

25个博士课程（双博士/联合博士）



25 PhD Programmes (Dual/Joint PhD)



学术行业伙伴关系



Academia – Industry Partnerships



全球网络成员



Global Network Memberships



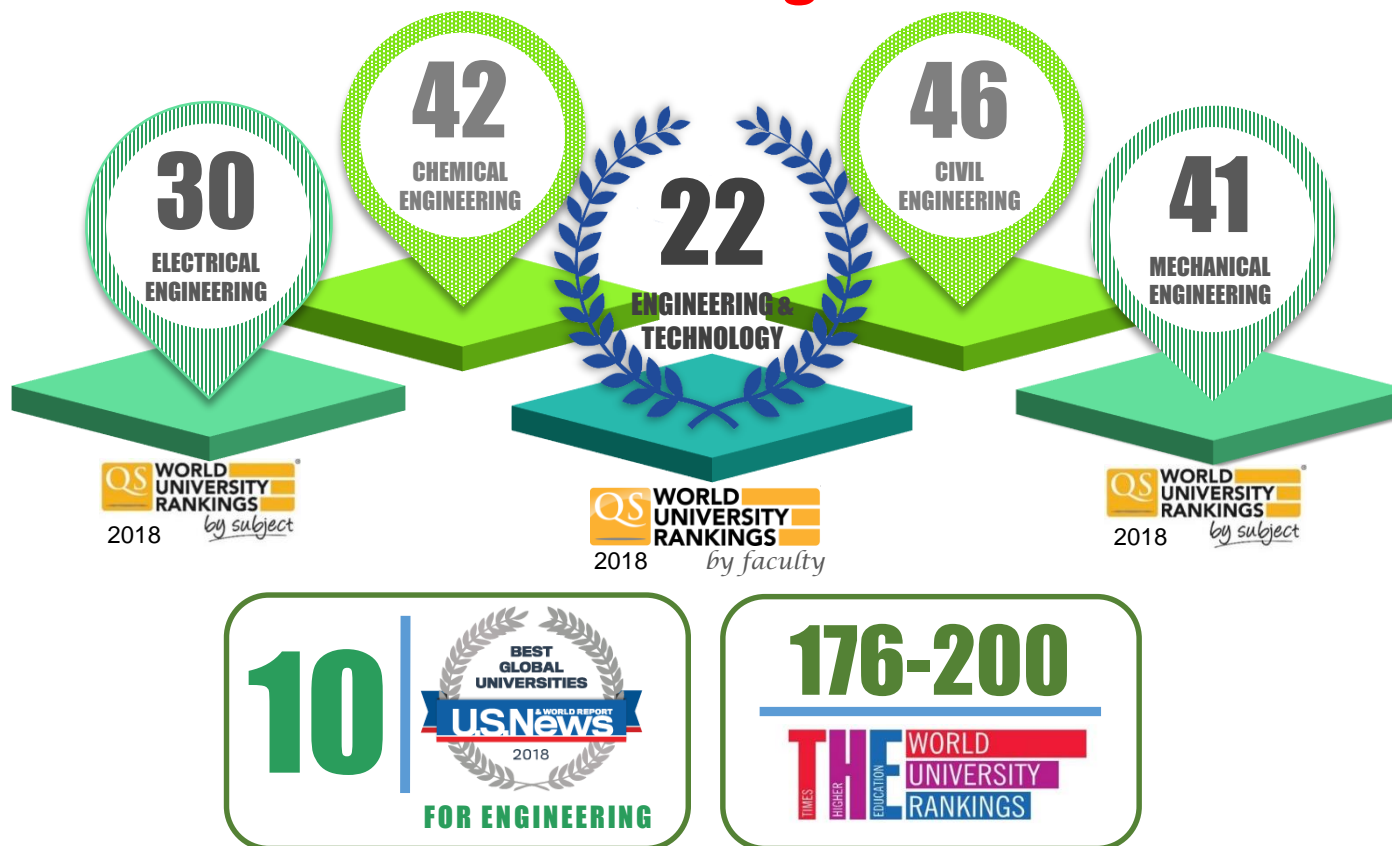
工程学院



学科世界排名



Rankings



電機工程:30;工程与技术:22;机械工程:41;土木工程:46;化工:42



Current Staff

学术人员 Academic Staff

Total 151

17 Professor	38 Associate Professor
80 Senior Lecturer	6 Lecturer
28% Principal Investigator	7% International Staff

Professional & Chartered Engineer

Total 44

Total 66

3 Civil	8 Biomedical	8 Chemical	13 Electrical	12 Mechanical
3 Civil	13 Biomedical	9 Chemical	16 Electrical	25 Mechanical

P.Eng

C.Eng

Non-Academic Staff

Total 140

43 Administrative	48 Technical
30 Science	10 Information Technology
6 Researcher	2 Finance
	1 Driver



Current Students

本科生

Undergraduate
Students

2030

379

Civil

234

Biomedical

350

Chemical

433

Electrical

634

Mechanical

5%

International
Students

土木、電機、
化学、机械、
生物医学工程



Postgraduate
Students

研究生

Total 540

52%

PhD

32%

M.Eng.

16%

M.Eng. Science

30%

International
Students



合作与商业化



Collaborations & Commercialization

工程学院工业联络处

More than 150
MOUs with
Universities.

Industrial Liaison
Division: eUM-
Industrial
Innovation Centre
(8 industries)

About RM 230
million in kind
pledge to be
recovered.

Successful
spin-off:
BioApps,
ZECTTRON and
Flexilicate.



MOTOROLA



Agilent Technologies



HUAWEI





研究经费 **Research Funding**

GRANT RECEIVED FOR 2017

RM1,656,387.60

RM278,544.75

International Grants

4 Projects

RM315,376.85

Private (Industry) Grants

2 Projects

RM1,062,466

National Grants

19 Projects

25 No. of Principal Investigator

ONGOING GRANTS 2018

RM9,984,527.27

74 No. of Principal Investigator

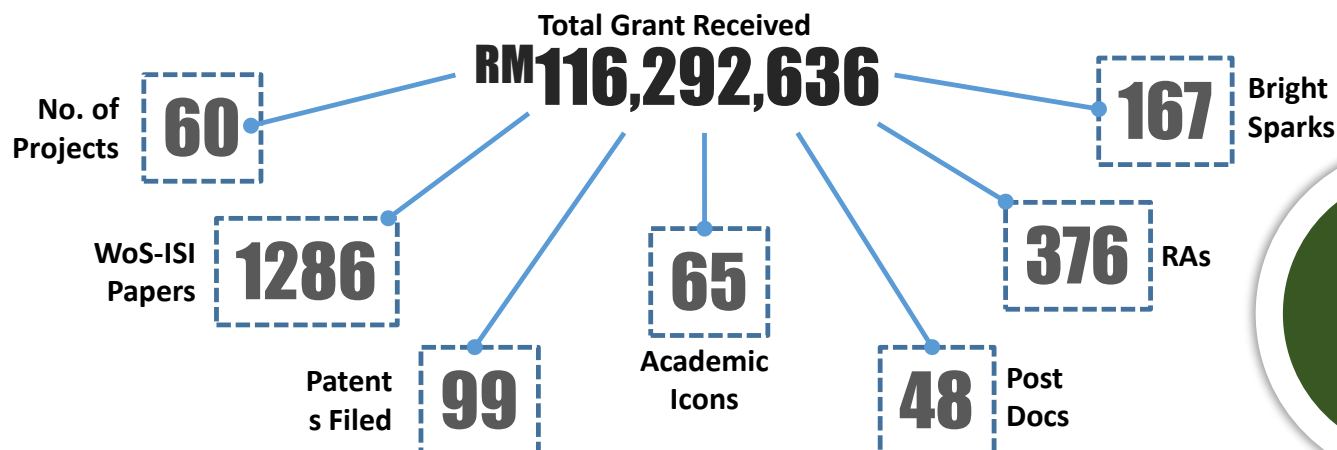
ISI – WoS Publication Statistics

636 Total ISI Publication

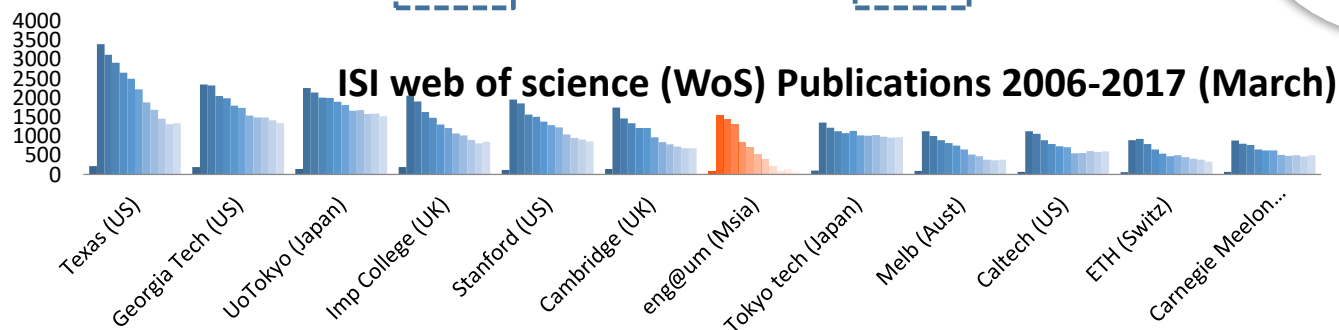
4.0 Paper to Staff Ratio



研究产出 **Research Output**



Publication
increased
191%





关于“中马半导体照明联合研究与技术示范平台”合作备忘录
MOU China-Malaysia Solid State Lighting Joint Research and Technology
Demonstration Platform (22 November 2018)





Smart Agriculture Initiative (智慧农业):

(A) A Novel Hyperspectral Imaging (HSI) System for Earlier Disease Prevention; 早期疾病预防的新型高光谱成像系统

(B) High Efficiency & Low Energy LEDs Vs Flexible Colour Skins for Intelligent Plant Factory & Plant Fostering;
高效低能LED与柔性彩皮在智能工厂和工厂培育中的应用

(C) A Novel Micro Gas Preconcentrator-Chemical Sensing Device (MGP-CSD) & System for Volatile Organic Compounds (VOCs)

In Non-invasive Diagnostics and Preventive System: Ganoderma Disease (Case Study) 微气体预浓缩器化学传感装置 (MGP-CSD) 和非侵入性诊断和预防系统中挥发性有机化合物 (VOCs) 系统：灵芝病

PROF DR Ir CLARENCE ATH TEE 池得閣 博士(劍橋)

PhD (Cambridge), PEPC (Electrical), CEng (UK), ACPE (Electrical), Fellow IET, Fulbright Fellow;
博士(劍橋), 专业工程师执业证书(電機), 特许工程师(英国), 东盟特许专业工程师(電機), 工程技术学院尊贵学会会员(英国),
富布赖特尊贵学会会员。

**PROFESSOR (Department of Electrical Engineering, 教授, 電機工程學系),
DIRECTOR (Industrial Liaison Division, 总监, 工程学院工业联络处).**

(B)ii. Potentials for Smart Agricultural Applications

Flexible Colour Skins Vs LEDs



Plants fostering
植物培育

智能工厂：高效低能耗LED



Smart Plant Factory: High Efficiency & Low Energy LEDs





THANK YOU